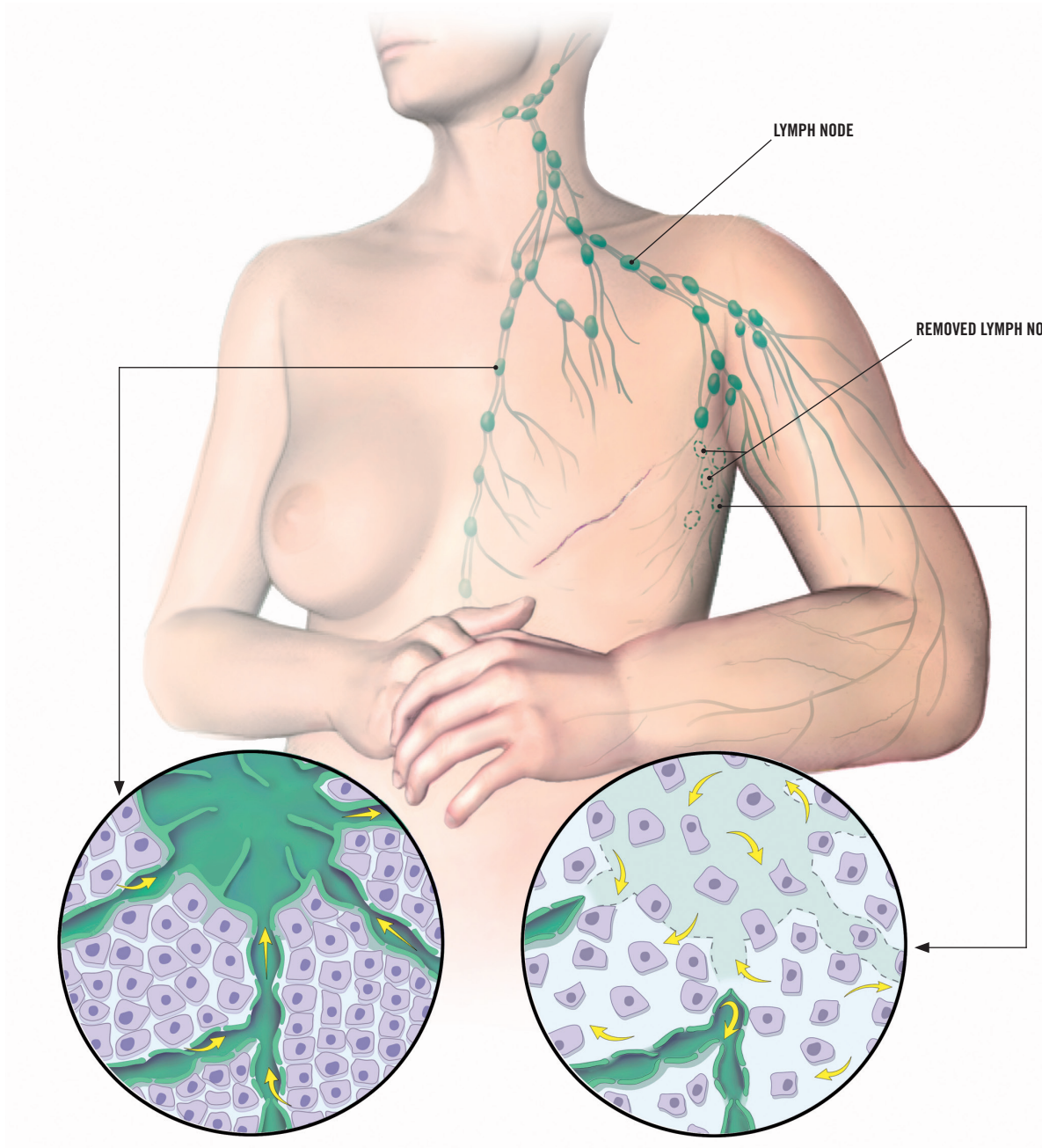


Lymphedema

Surgery or radiation on the lymph nodes may result in lymphedema, a disruption in the flow of lymph fluid that causes swelling.



Lymph nodes help maintain the body's fluid balance, filter out waste products and defend the body against threats, such as bacteria.

The normal flow of **lymphatic fluid** is disrupted when lymph nodes are removed or destroyed. Injury, infection or overuse can lead to a backup of fluid that causes swelling of the affected area.