

# Welcome to the Tennessee Oncology DDU Open House

*January 22, 2026*

***Bringing Phase 1 research to community oncology practices***

**“I learned that a clinical trial was an incredible opportunity for me to get access to treatment that might otherwise not be available to me for years”**

**– TNBC Research Patient**

# The History of GHCR

**The Greco-Hainsworth Tennessee Oncology Centers for Research (GHCR) is Tennessee Oncology's dedicated clinical research division. Named to honor Drs. Anthony Greco and John Hainsworth, who founded Tennessee Oncology's original research arm in 1993, GHCR continues Tennessee Oncology's 40+ year legacy of groundbreaking cancer care innovation.**

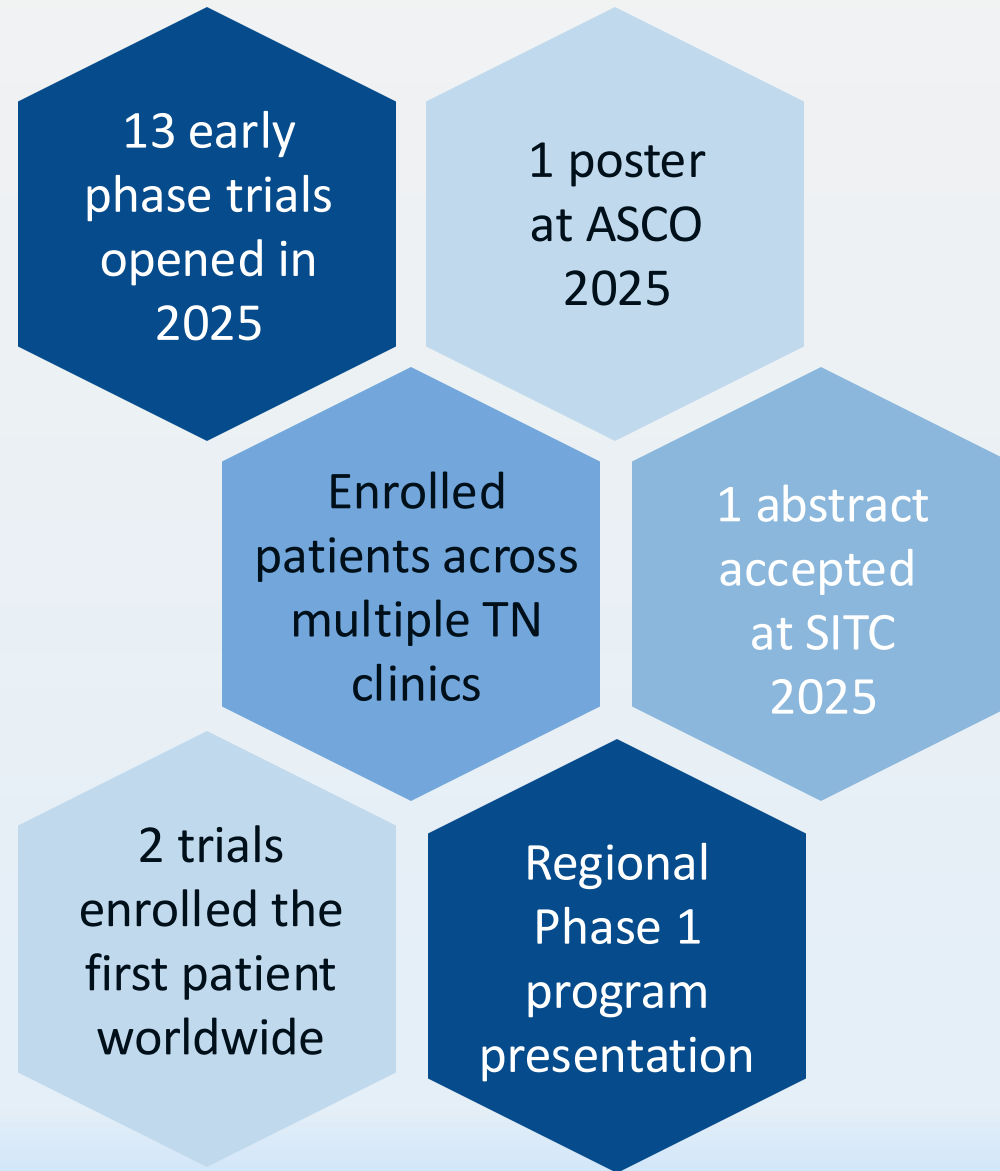


F. Anthony Greco, M.D.



John Hainsworth, M.D.

# 2025 Early Phase Program Milestones



**“Even if the trial doesn’t help me, maybe it will help others down the line.”**

**- Extensive-Stage SCLC Research Patient**





# Drug Development Unit Capabilities

## Phase 1 Capabilities

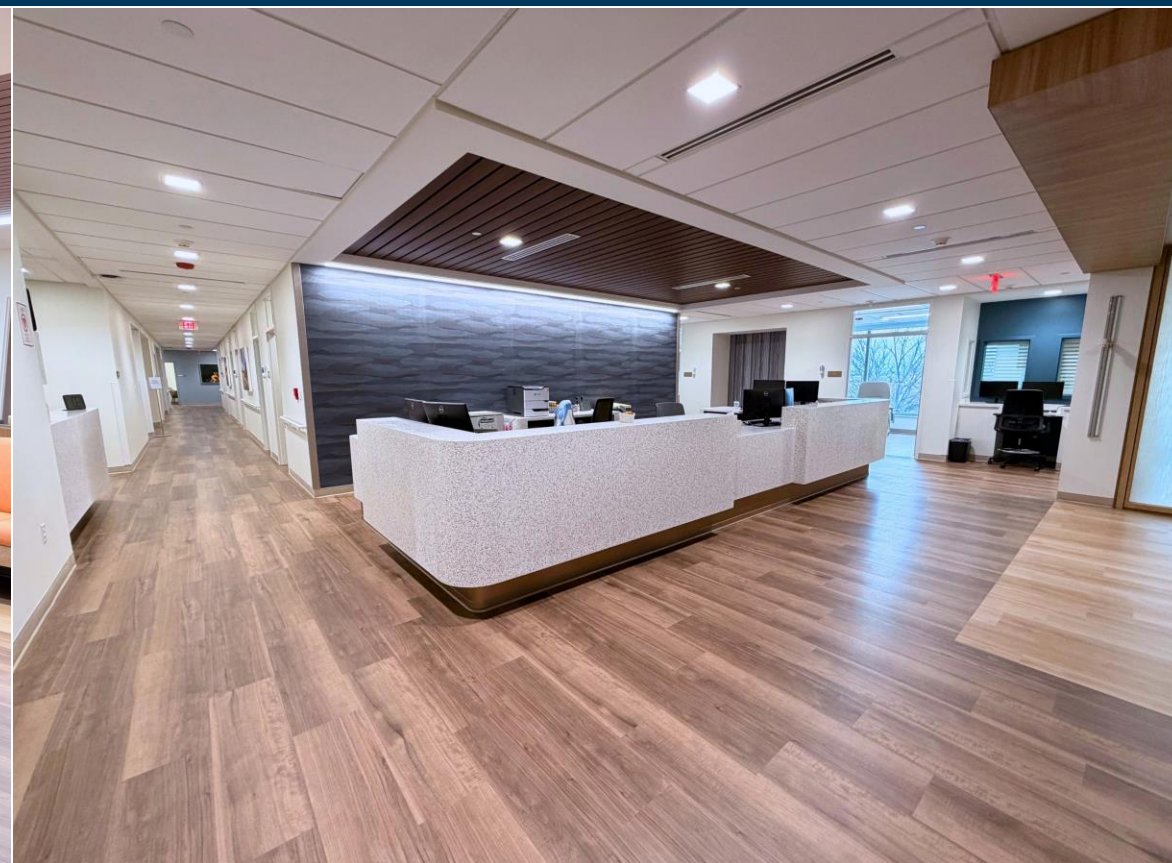
- Bispecifics/CAR T (admit/hospitalize for CRS management)
- RLT (in development for 2026)
- Oncolytic Viruses
- Prolonged PKs – up to 12 hrs, admit PRN
- Research biopsies / Injectables
- Multiple sub-specialists
- Dedicated Phase 1 Staffing

## Facility

- 12 exam rooms, 1 injection room
- 4 dedicated PK rooms
- 14 infusion chairs, 2 private infusion rooms
- Hot Lab / RLT Processing



# Lobby and Medical Assistant Station





# PK Rooms & Exam Rooms



TENNESSEE  
ONCOLOGY





# DDU Lab



**“Joining a treatment study gives me hope for tomorrow.”**

**- Melanoma Research Patient**





## Infusion Area

 **GRECO-  
HAINSWORTH**  
CENTERS FOR RESEARCH

**TENNESSEE  
ONCOLOGY**





# Research Lab: Kit Storage







## Research Lab: Processing Benches, Centrifuges and Freezers



## Research Pharmacy: USP 797/800 Hazardous IP Compounding Space





Research Pharmacy: USP 797/800 Non-hazardous IP  
Compounding Space and Ante Room



Research Pharmacy: Hazardous and Non-hazardous IP storage spaces equipped with room temperature, refrigerated, -20 freezer, and -80 freezer IP storage spaces





**HOT LAB**

Braille characters

Hot Lab (coming 2026)



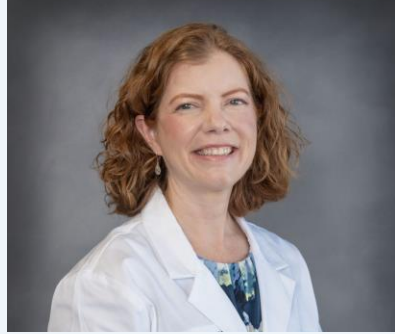
**“Love the staff. I’m treated very well here.”**

**- Extensive-stage SCLC Research Patient**

# Tennessee Oncology: Research Directors



**Ian Flinn, MD, PhD**  
Chief Scientific Officer



**Katy Beckermann, MD, PhD**  
Director of GU Research



**Jesús Berdeja, MD**  
Director of Multiple  
Myeloma Research



**Mike Byrne, DO**  
Director of Cellular Therapy  
Research, Lymphoma  
Investigator



**Brian Grieb, MD, PhD**  
Director of GI Research



**Wade Iams, MD, MSCI**  
Director of Lung Cancer  
Research



**Sara Nunnery, MD, MSCI**  
Director of Breast Cancer  
Research



**Jeff Russell, MD, PhD, MBA**  
Director of Early Phase Research

# Tennessee Oncology: Research Leadership



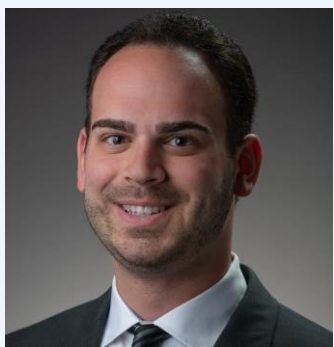
**Jonathan Abbas, MD**  
Myeloid Investigator



**Bertrand Anz, MD**  
Investigator, Heme  
Malignancies



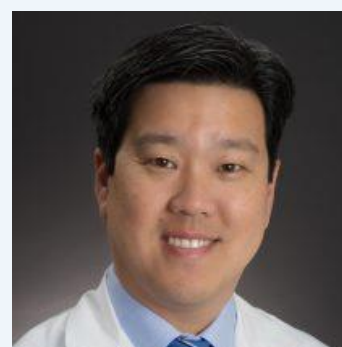
**Will Donnellan, MD**  
Investigator, Heme  
Malignancies



**Constantine Logothetis, MD**  
Myeloid Investigator



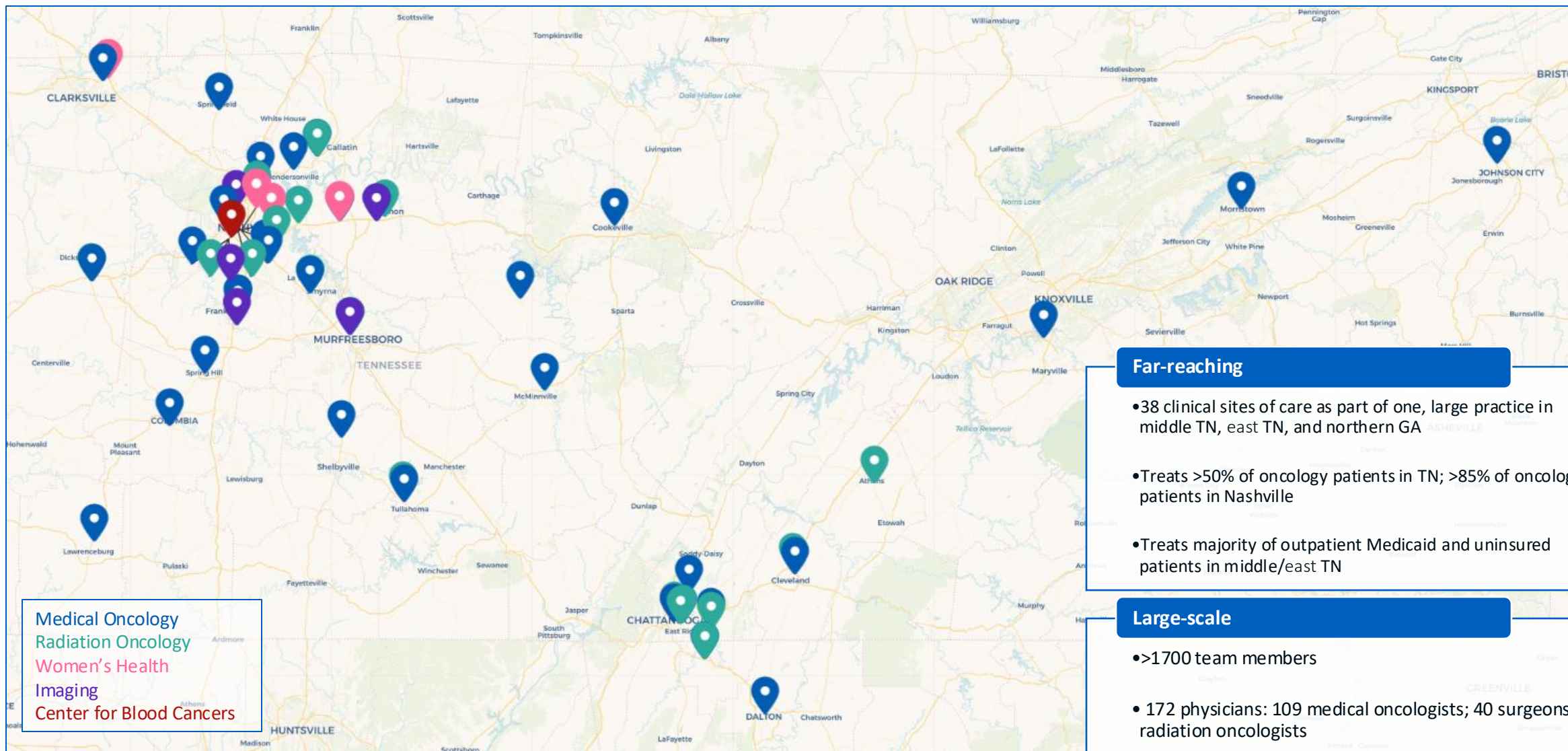
**Joseph Merriman, MD**  
Assistant Director of Early  
Phase Research



**Kent Shih, MD**  
Melanoma and CNS  
Investigator



# Tennessee Oncology: Far-Reaching Footprint



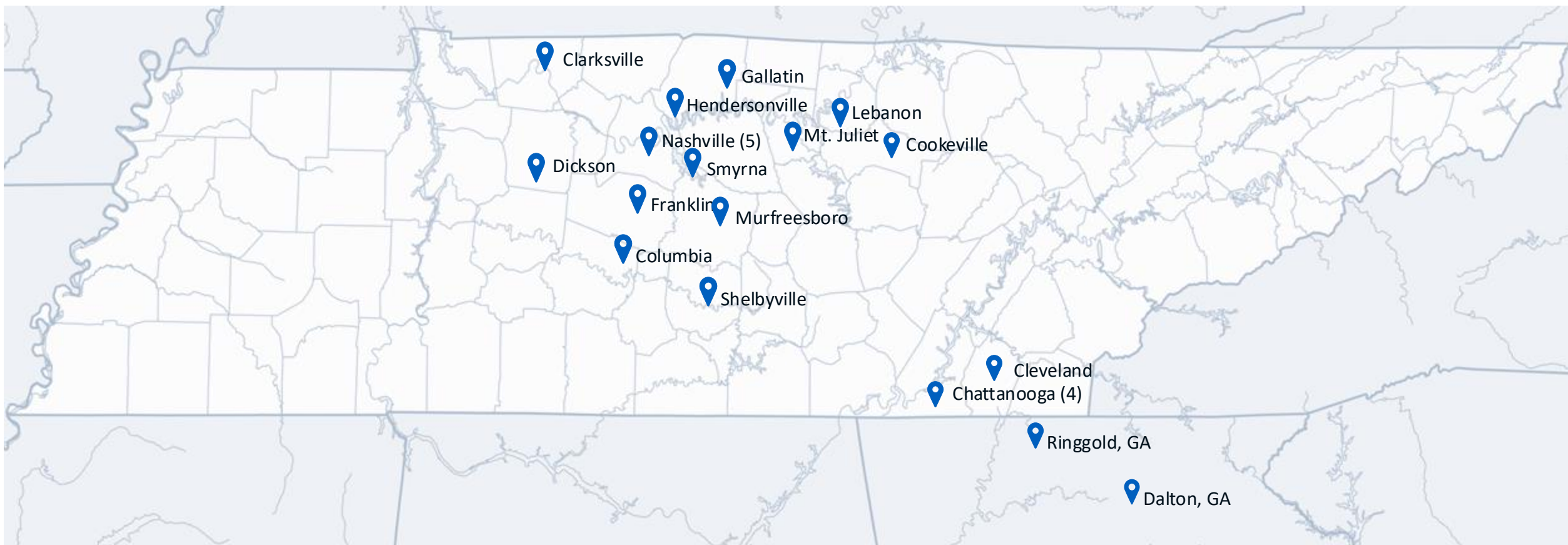
## Far-reaching

- 38 clinical sites of care as part of one, large practice in middle TN, east TN, and northern GA
- Treats >50% of oncology patients in TN; >85% of oncology patients in Nashville
- Treats majority of outpatient Medicaid and uninsured patients in middle/east TN

## Large-scale

- >1700 team members
- 172 physicians: 109 medical oncologists; 40 surgeons, 23 radiation oncologists
- 136 APPs

# GHCR: Our Research Clinic Footprint



**Nashville:** Elliston Place Plaza (includes the DDU), Midtown Women's Health, Skyline, Southern Hills, Saint Thomas West

**Chattanooga:** Downtown, East, Med Park II, Memorial



# GHCR: Cutting Edge Science in the Community

Community Research	Research trials available to patients in the rural communities in which they live
Cell Therapy and bsAbs	Ability to operationalize FIH-Ph III cell therapy and bsAb studies
Radioligand Therapy	Ability to operationalize radioligand trials, bringing targeted radiation approaches closer to home for patients.
Hospitalization Capable	Partnered with Ascension Saint Thomas Midtown Hospital (Nashville, TN) to hospitalize research patients
Molecular Profiling	Identifying eligible patients for molecularly-driven trials



# GHCR: Our Efficient Single-Site Model

## One Pharmacy

- IP is shipped to a central pharmacy and couriered to research clinics.

## One PI and IRB submission

- One PI located in either the Nashville or Chattanooga area oversees study activities across clinics.

## One Budget and Contract

- Only one budget and contract would need to be completed to allow for faster start-up timelines



**“I’m not a number. I’m a person here.”**

**- Extensive-Stage SCLC Research Patient**



Thank you for joining us!